

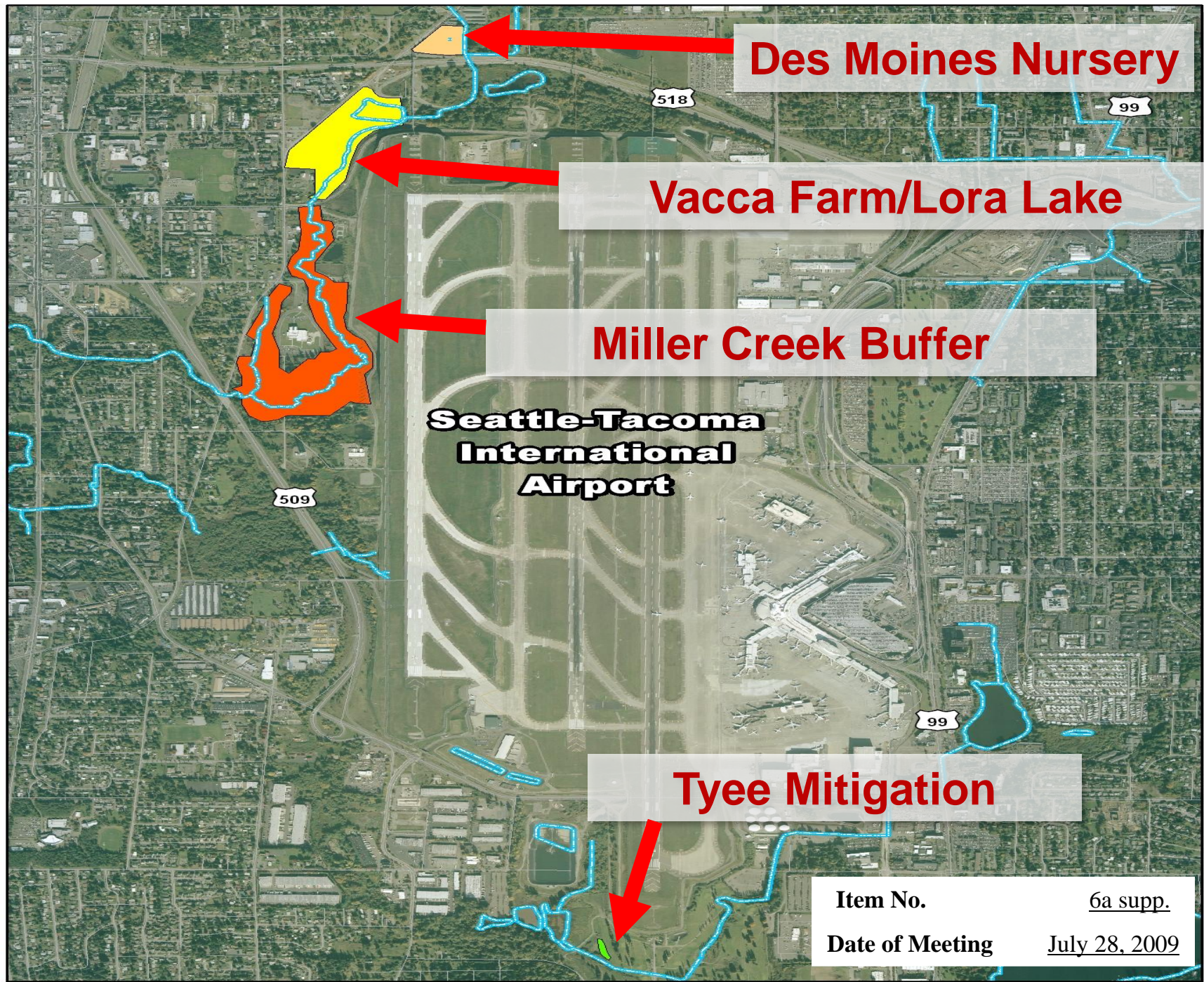
Prepared by POS Survey & Mapping Services: Figure1\_Overall\_Map.mxd, Date: July 21, 2009

-  Vacca Farm/Lora Lake & Miller Creek Relocation
-  Miller Creek Buffer
-  Auburn Wetland Development Project
-  Hydrography



**Figure 1. Vicinity Map of STIA MPU Improvements Mitigation Projects**





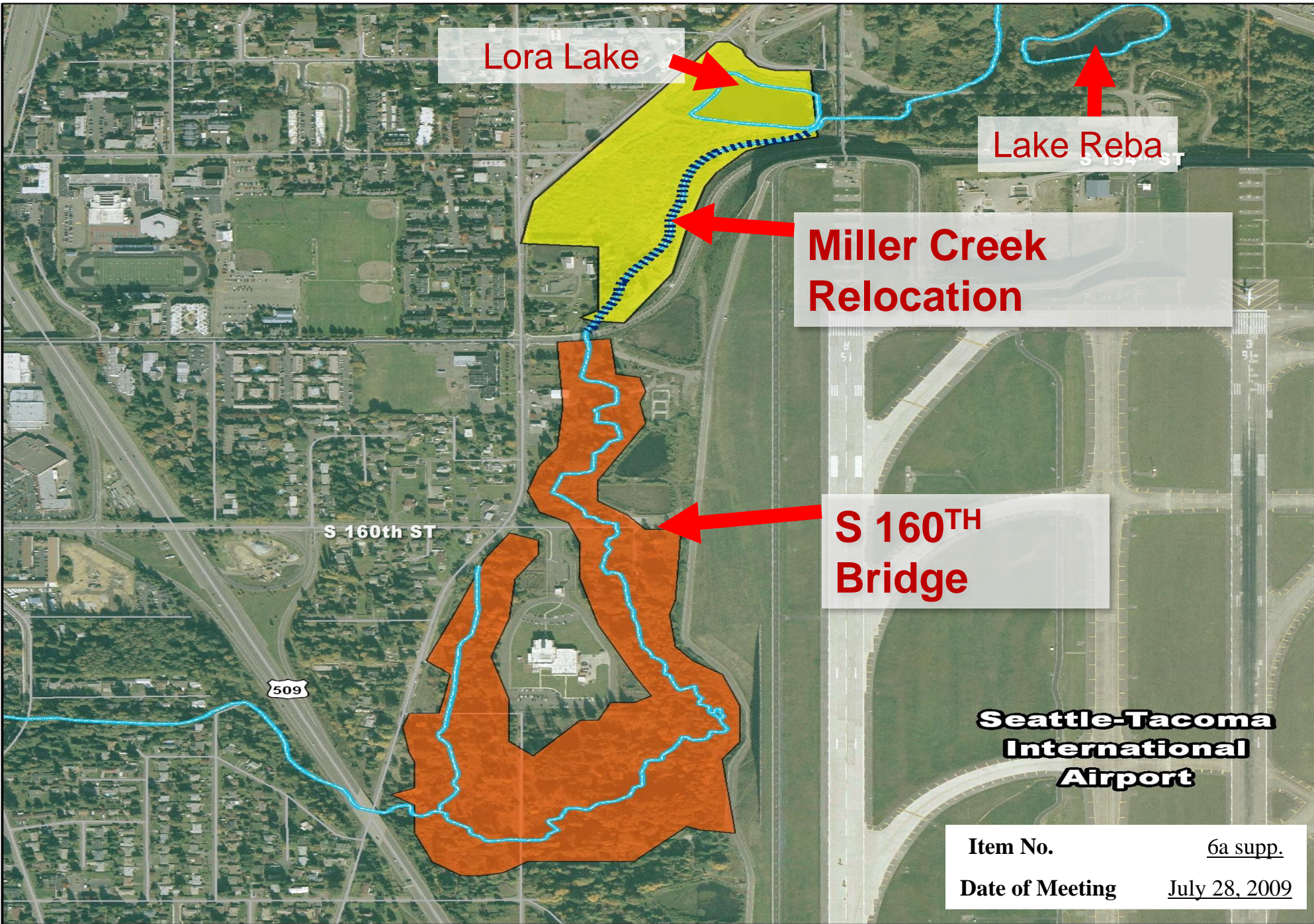
Prepared by POS Survey & Mapping Services: Figure1\_Overall\_Map.mxd, Date: July 21, 2009

- Hydrography
- Roads



Figure 2. Airport Vicinity Map





Prepared by POS Survey & Mapping Services: Figure3\_MillerCreek\_Relocation.mxd; Date: July 21, 2009

- Vacca Farm/Lora Lake & Miller Creek Relocation
- Miller Creek Buffer
- Hydrography
- Roads



**Figure 3. Miller Creek Relocation and S 160th Bridge**



# 160th Street Box Culvert



**Item No.**

6a supp.

**Date of Meeting**

July 28, 2009



# 160th Street Box Culvert



**Item No.**

6a supp.

**Date of Meeting**

July 28, 2009